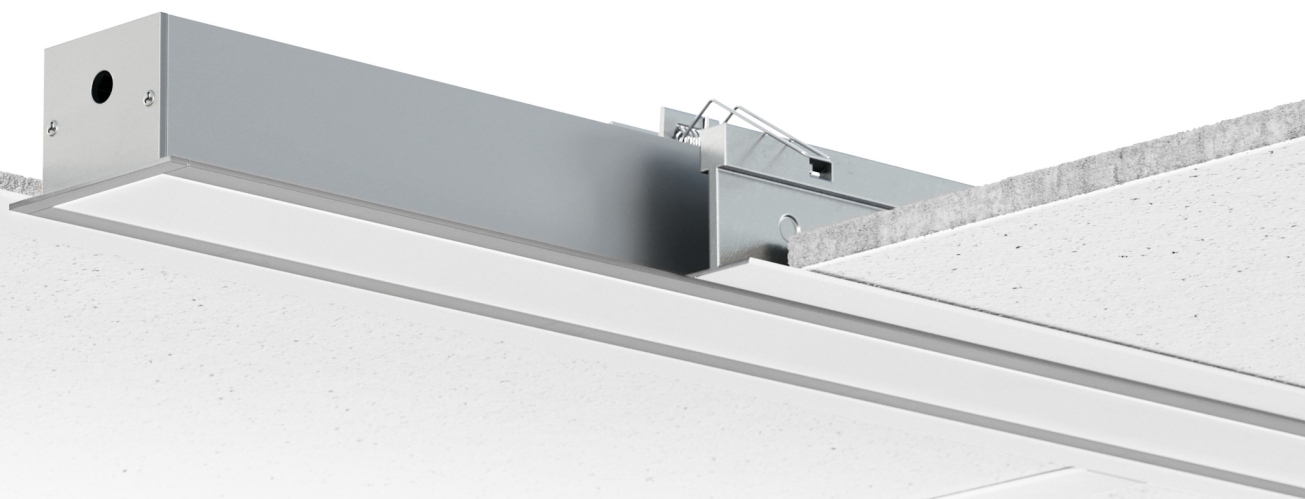


VIV5535F is a recessed linear profile made of extruded aluminum housing with a protective silver anodized finish, capped with a flush frosted lens.

This linear LED luminaire is designed to produce a uniform distribution of diffused light in ceiling tile and ceiling board applications. VIV5535F can be mounted using recessed spring clips and used with connectors to attach multiple channels together. Connectors are available to form 90° angle, T-shape, cross, and linear extensions to enable creation of unique linear patterns. This channel comes in variable lengths up to 8 feet.*

Vivid series can be conveniently controlled with multi-zone wall touch keypad and smart mobile app options. VIV5535F is a perfect fit for use in residential and commercial spaces for damp and dry applications to produce ambient or decorative illumination.

EnoLight lighting solutions are designed and manufactured in Canada to the highest industry standards with 5 years warranty.



ELECTRICAL

WATTAGE

5W/ft, 10W/ft
24 Volt DC input

OPERATING TEMP

-31°F to +113°F
-35°C to +45°C

CERTIFICATION

U.S./Canada UL approved
Type IC Recessed



CONTROL

DIMMING MODE

Class 2 Flicker-Free
Dimmable, DMX Tunable,
Non-Dimmable

WALL KEYPAD

Dimmer switch, Multi-zone
DMX dim and tuning touch
key with smart mobile App

PHYSICAL

DIMENSION

2.17 in x 1.38 in, 55x35mm
Up to 8ft length, 0.46 lb/ft

FINISH

Silver anodized, Black matte,
White matte *

FIELD

Recessed in damp or dry
ceiling boards



LIGHT

LED TYPE

Single white, Tunable white,
RGBW, Circadian Rhythm

EFFICACY

100 Lm/W, Max 800 Lm/ft *

LIFESPAN

50,000 hours

WARRANTY

5 years warranty

SPECIFICATIONS

VIV5535F	8F	400	SA	30K	JT	F2
1.5" Wide Lens Ceiling Board Recessed Light	1FT-8FT 1' to 8' Custom length up to 8'	400 400lm/ft 5W/ft 800 800lm/ft 10W/ft	SA Silver Anodized BM Black Matte WM White Matte	27K 2700K Incandescent 90CRI 30K 3000K Warm Halogen 90CRI 35K 3500K Neutral White 90CRI 40K 4000K Cool White 90CRI 50K 5000K Daylight White 90CRI 27T 2700K-6500 Tunable 90CRI RGBW RGB and 6500K White 90CRI CR Circadian Rhythm 97R9 98CRI	JT Triac Phase Dimming JX DMX Multi-Channel JN Non-Dimmable JD DALI Dimmable	F2 Dry Field F3 Damp Field

* Available for custom applications. Visit enolight.com or contact sales@enolight.com for further details.

Disclaimer: The actual product may vary from the images shown. Due to differences in monitors, colours of products may also appear different to those shown. Specification and illustrations provided for each product is to be used as a general guide only. Copyright © EnoLight Ltd. All Rights Reserved.