

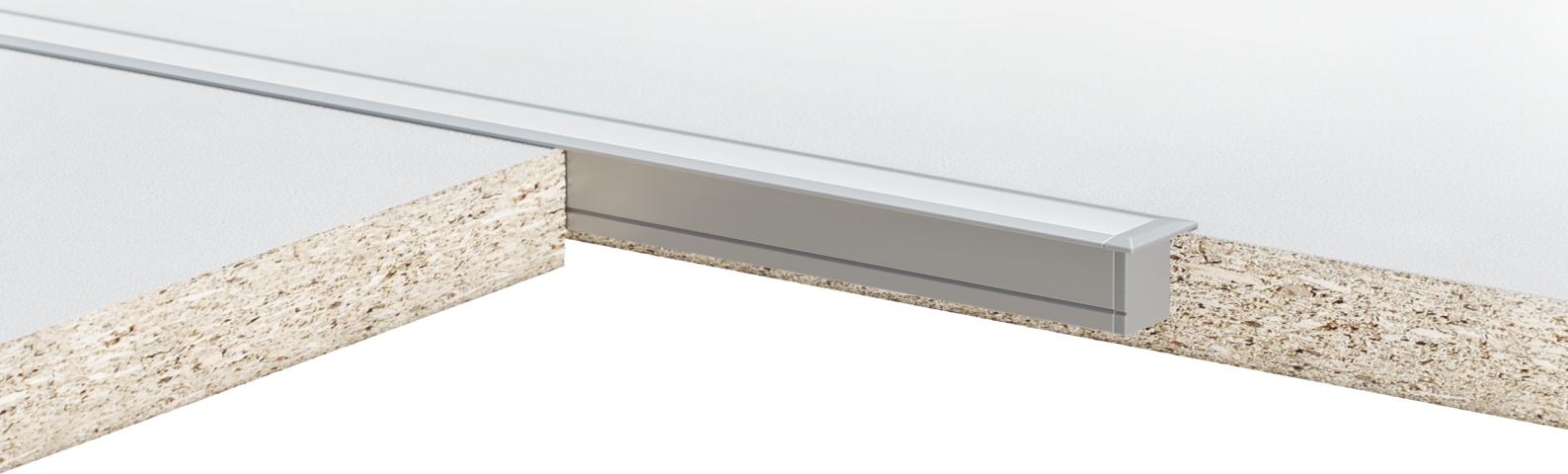
HYN1815F is a linear trim recessed profile made of extruded aluminum housing with a protective silver anodized finish, capped with a flush frosted lens.

This luminaire is designed to produce a uniform distribution of diffused light in wooden, tile and stone platforms. HYN1815F has edge trims construct to cover dents and chips across the groove where the light is installed recessed. This channel comes in variable lengths up to 8 feet. \*

Hyphen series are complemented with dimmable, energy-efficient, dot-free LED, producing high color rendering index lighting. The bright white LED light source with CCT options from 2200K to 6000K provides the environment with desired lighting that fits the design concept.

The lighting system can be conveniently controlled with wall remote, hand remote, and smart app options. HYN1815F is a perfect fit for use in indoor and outdoor applications to produce ambient or decorative illumination.

EnoLight lighting solutions are designed and manufactured in Canada to the highest industry standards with 5 years warranty.



SPECIFICATIONS

**ELECTRICAL**

**Input**

24 V - 2.4 W/ft - 8 W/m

**Power Supply**

Class 2 Dimmable 20KHZ  
Lutron Hi-lume 0.1%  
Lutron 3-wire 100%-1%

**Operating temp**

- 31°F to + 113°F  
- 35°C to + 45°C

**Certification**

U.S./Canada UL approved  
Type IC Recessed



**CONTROL**

**Options**

Combination of wireless wall touch keys, portable remotes, and mobile App

**Range**

Wireless controlling transmits RF in 30m range

**Multi-zone**

Individual and collective zone options for color and brightness control

**Dimming**

Brightness, color tuning, & light mode with memory saving options

**PHYSICAL**

**Dimension**

0.71 in x 0.59 in - 18x15 mm  
Up to 8 ft (2.5 m) length \*  
0.12 lbs/ft - 0.18 kg/m

**Finish**

Silver anodized aluminium, black, or white finish \*

**Field**

Indoor dry applications

**Mounting**

Recessed under cabinet or wooden platforms



**LIGHT**

**LED type**

Single and tunable white, Circadian BIOS SkyBlue

**CCT**

3000K 3500K 4000K  
4500K 5000K 5500K \*

**CRI**

High CRI up to 97 \*

**Brightness**

200 Lm/ft - 700 Lm/m \*

**Life time**

50,000 hours

**Warranty**

5 years warranty